

SINGER

7033

317161018

LIST OF PARTS

Sewing Machine Model

7033

7033

From the library of: Diamond Needle Corp

by **SINGER***



A Publication of Product Support
International Group Engineering

Part No. 317161-018

Printed in Taiwan

* A trademark of The Singer Company
Copyright 1991, Singer Sewing Machine Company

All rights reserved throughout the world

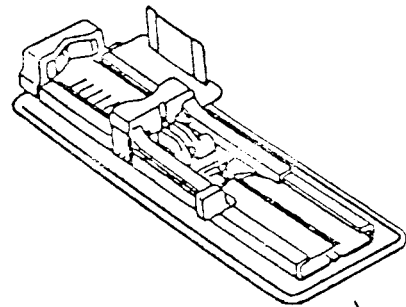
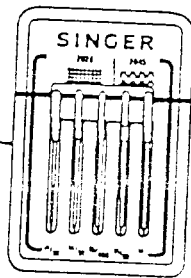
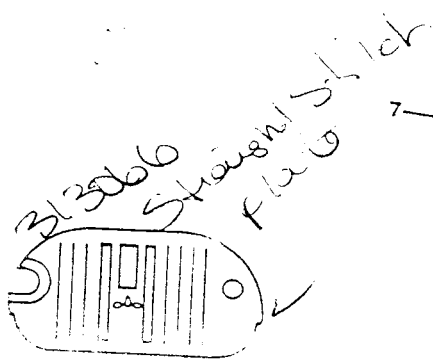
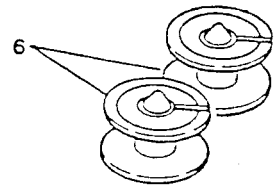
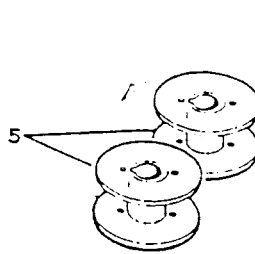
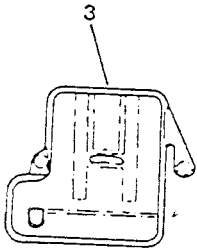
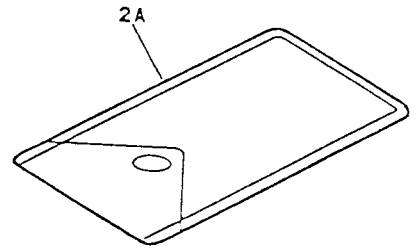
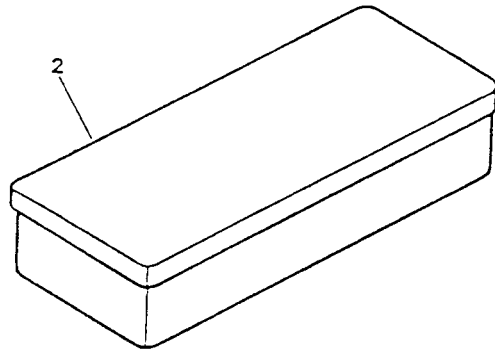
INDEX

PAGE NO.	SUBASSEMBLY
1, 2	ATTACHMENT SET
3, 4	COVERS AND ADD ONS
5, 8	ARM TOP COVER
9, 10	ARM SHAFT DRIVE SYSTEM
11, 12	HAND WHEEL
13, 14	COAXIAL PRESSER BAR SYSTEM
15, 16	NEEDLE BAR & THREAD TAKE-UP
17, 18	ALPHA FEED
19, 20	HOOK SYSTEM (AFOLLO)
21, 22	HOOK AND BOBBIN WINDING SYSTEM (CENTAUR)
23, 28	PATTERN, STITCH LENGTH CONTROL & CAM CONTROLLED FEED
29, 30	DEMAND RESPONSIVE NEEDLE TENSION SYSTEM
31, 36	ELECTRICAL EQUIPMENT

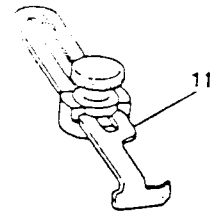
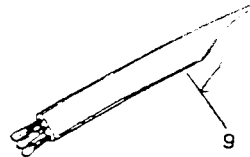
ATTACHMENT SET
MODEL: 7033

REF. PART NO.	PART NO.	DESCRIPTION
1	313030-140	ATTACHMENT COMPLETE
2	402673-455	ACCESSORY BOX COMPLETE (ALT:402673-454)
3	313117	FEED COVER PLATE
5	172336-00/	BOBBIN (APOLLO)
7	353364	NEEDLE PACK (ALT:384064)
9	546358	LINT BRUSH
13	313992-451	PRESSER FOOT PLATE (4-STEPS) FOR SEWING BUTTONHOLES
15	171480	PRESSER FOOT PLATE (SNAP-ON) FOR CORDING AND SLIDE FASTENERS COMPLETE
17	171463	SPECIAL PURPOSE PRESSER FOOT PLATE (SNAP-ON)
20	421588	FINGER GUARD (FOR CONTINENTAL EUROPE)
21	171110	BLINDSTITCH GUIDE

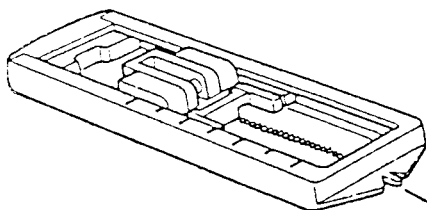
slant



8



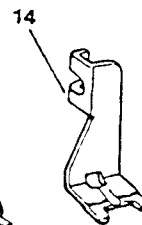
10



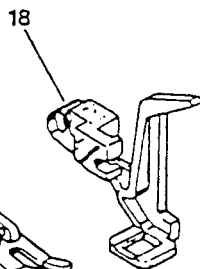
13



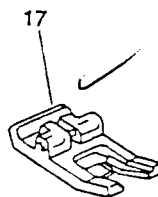
12



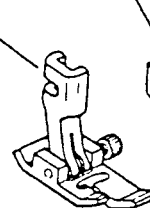
14



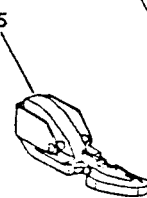
18



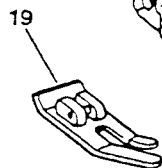
17



16



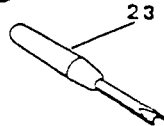
15



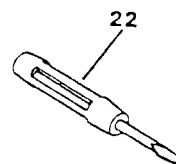
19



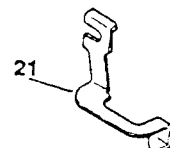
20



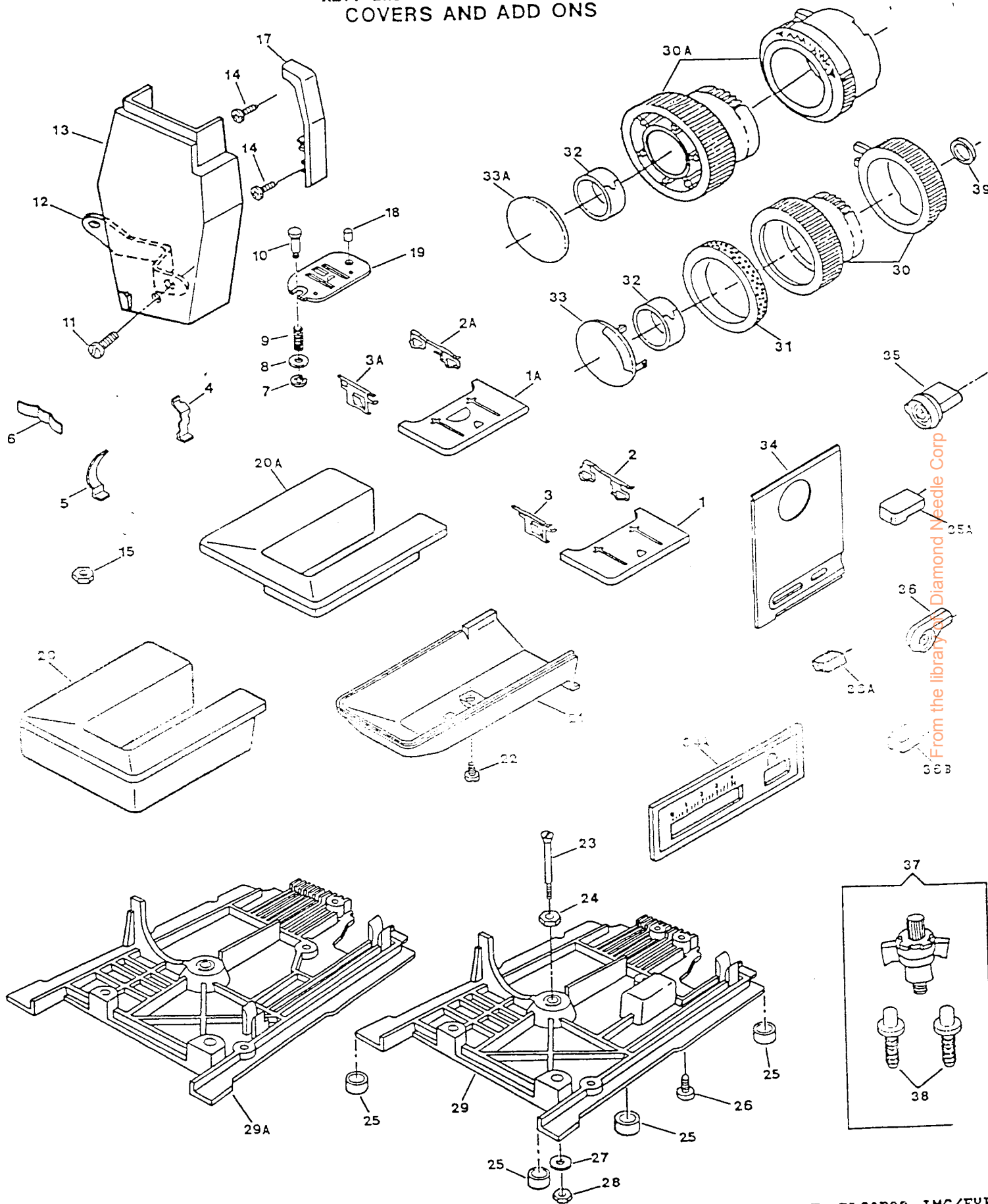
23



22



21



From the library of Diamond Needle Corp

COVERS AND ADD ONS
 MODEL: 7033N102, N203, N203A, LEN203

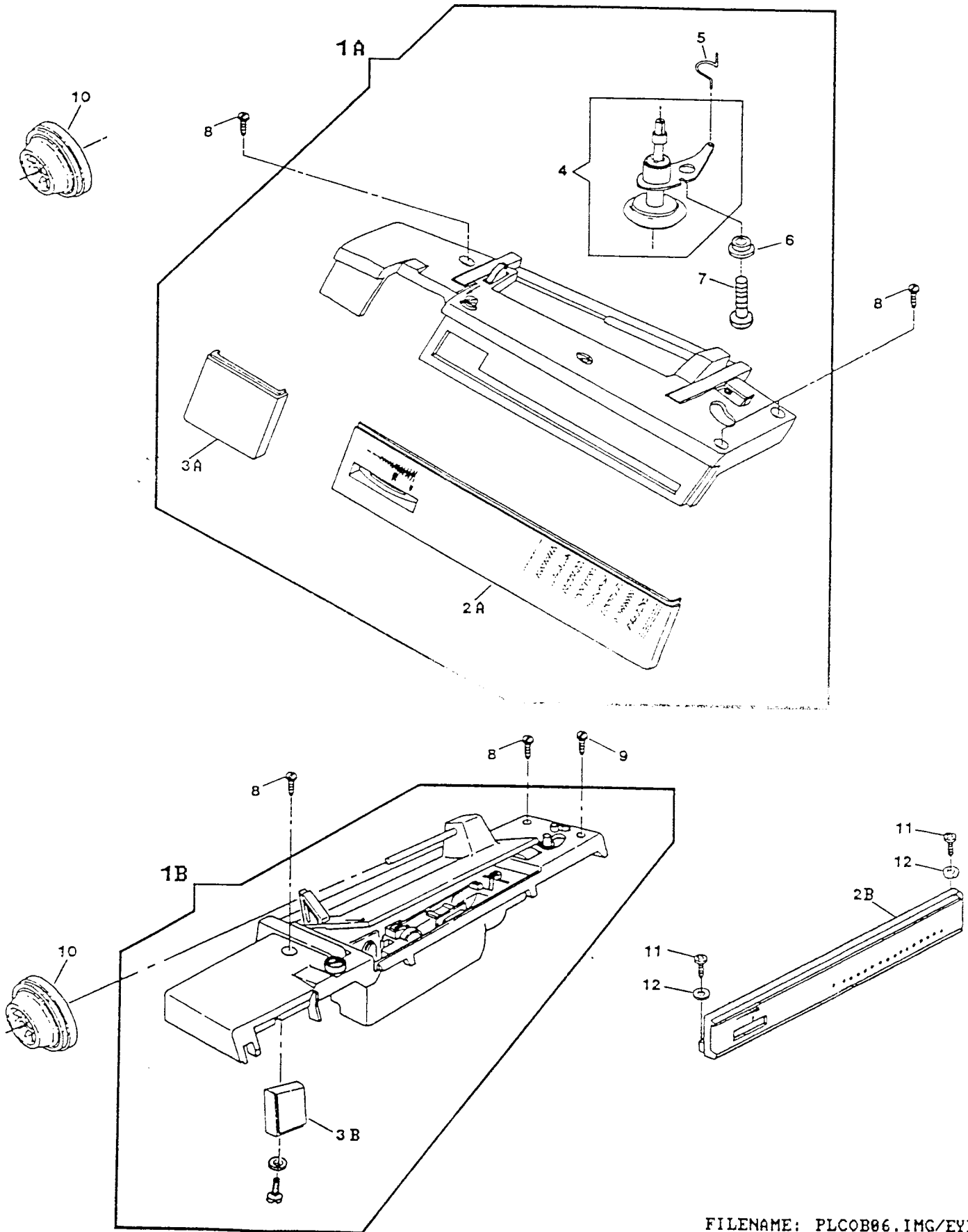
REF. PART NO.	PART NO.	DESCRIPTION	N	N	N	LN
			1	2	2	E2
			0	0	0	0
			3	3	3A	3
1	314666	BED SLIDE ASSEMBLY COMPLETE (APOLLO)				
2	314669	BED SLIDE SPRING (RIGHT)	X	X	X	X
3	314670	BED SLIDE SPRING (LEFT)	X	X	X	X
4	313178	BED SLIDE STOP	X	X	X	X
5	313179	BED SLIDE STOP SPRING	X	X	X	X
6	313118	CLOTH PLATE SPRING	X	X	X	X
7	313098	THROAT PLATE PLUNGER RETAINING RING	X	X	X	X
8	549426-451	THROAT PLATE PLUNGER WASHER	X	X	X	X
9	312805	THROAT PLATE PLUNGER SPRING	X	X	X	X
10	312804	THROAT PLATE PLUNGER	X	X	X	X
11	113521-451	FACE PLATE MOUNTING SCREW	X	X	X	X
12	314263	FACE PLATE MOUNTING BRACKET	X	X	X	X
13	314259-451	FACE PLATE COMPLETE (#310K)	X	X	X	X
13	314259-454	FACE PLATE COMPLETE (#3889)	X			
14	113470-003	THREAD TAKE-UP COVER MOUNTING SCREW		X	X	X
17	314718-451	THREAD TAKE-UP COVER (#310K)	X	X	X	X
17	314718-455	THREAD TAKE-UP COVER	X			
18	353624	THROAT PLATE LOCATING PIN		X	X	X
19	312777	THROAT PLATE FOR ZIG ZAG SEWING	X	X	X	X
20	313862-451	CLOTH PLATE (#310K)	X	X	X	X
20	313862-452	CLOTH PLATE 317361452	X			
21	312773-451	BED COVER TUBULAR (#310K)		X	X	X
21	312773-452	BED COVER (TUBULAR)	X			
23	313052-451	BOTTOM COVER MOUNTING BOLT		X	X	X
24	313077-451	BOTTOM COVER MOUNTING BOLT RETAINING NUT	X	X	X	X
25	313909-451	BED LEG CUSHION	X	X	X	X
26	311471-452	BED COVER PLATE (BOTTOM) SCREW	X	X	X	X
27	314710-451	BOTTOM COVER MOUNTING BOLT WASHER	X	X	X	X
28	313077-452	BOTTOM COVER MOUNTING BOLT MOUNTING NUT	X	X	X	X
30A	314239-466	PATTERN SELECTOR KNOB AND STITCH BALANCE KNOB KIT ASSY (#310K)	X	X	X	X
32	313535	PATTERN SELECTOR KNOB AND STITCH BALANCE KNOB KIT ASSEMBLY	X	X		X
33A	314744-473	PATTERN SELECTOR KNOB COMPRESSION RING	X	X	X	X
33A	314744-497	PATTERN SELECTOR KNOB TRIM PLATE (FOR U.S.A.)	X	X	X	
34A	312883-007	PATTERN SELECTOR KNOB TRIM PLATE (FOR U.S.A.)				X
34A	317009-007	STITCH LENGTH CONTROL PANEL WITH GRAPHICS (FOR U.S.A.)	X	X		
34A	317009-021	STITCH LENGTH CONTROL PANEL WITH GRAPHICS (FOR U.S.A.)			X	
35A	312657-458	STITCH LEGTH CONTROL PANEL WITH GRAPHICS (FOR U.S.A.)				X
35A	312657-465	REVERSE FEED CONTROL LEVER KNOB (PLASTIC #310K)	X			
36A	314676-458	REVERSE FEED CONTROL LEVER KNOB (PLASTIC)		X	X	X
36A	314676-465	BIGHT AMPLITUDE CONTROL LEVER KNOB (PLASTIC #310K)	X			
36B	312664-458	BIGHT AMPLITUDE CONTROL LEVER KNOB (PLASTIC)		X	X	X
36B	312664-466	STITCH LENGTH CONTROL LEVER KNOB AND TENSION REGULATING KNOB (PLASTIC #310K)	X			
37	313180	STITCH LENGTH CONTROL LEVER KNOB (PLASTIC)		X	X	X
38	148269	MACHINE HOLD DOWN MOUNTING KIT	X	X	X	X
		MACHINE LOCATOR PIN	X	X	X	X

From the library of: Diamond Needle Corp

ARM TOP COVER
 MODEL: 7033N102, N203, N203A, LEN203

REF. PART NO.	PART NO.	DESCRIPTION	N	N	N	LN
			1	2	2	E2
			0	0	0	0
			3	3	3A	3
1A	317122-023	ARM TOP COVER COMPLETE WITH HANDLE (#310K)	X			
1A	317122-028	ARM TOP COVER COMPLETE WITH HANDLE		X		
1A	317122-076	ARM TOP COVER COMPLETE WITH HANDLE (FOR U.S.A.)			X	
1A	317122-079	ARM TOP COVER ASS'Y WITH HANDLE (FOR U.S.A.)				X
2A	314640-915	CONTROL PANEL WITH GRAPHICS (FOR U.S.A.)	X	X	X	
2A	314640-954	CONTROL PANEL WITH GRAPHICS (FOR U.S.A.)				X
3A	314703-916	CONTROL PANEL EXTENSION WITH GRAPHICS (FOR U.S.A.)	X	X		
3A	314703-954	CONTROL PANEL EXTENSION WITH GRAPHICS			X	
3A	314703-957	CONTROL PANEL EXTENSION WITH GRAPHICS (FOR U.S.A.)				X
4	314675	BOBBIN WINDER ASSEMBLY	X	X	X	X
5	312897	BOBBIN WINDER LEVER SPRING	X	X	X	X
6	312613	BOBBIN WINDER LEVER HINGE SCREW SHOULDER WASHER	X	X	X	X
7	113372-451	BOBBIN WINDER LEVER HINGE SCREW	X	X	X	X
8	354927-001	ARM TOP COVER MOUNTING SCREW	X	X	X	X
10	179967-451	SPOOL PIN THREAD LEAD-OFF (#310K)	X			
10	179967-456	SPOOL PIN THREAD LEAD-OFF		X	X	X

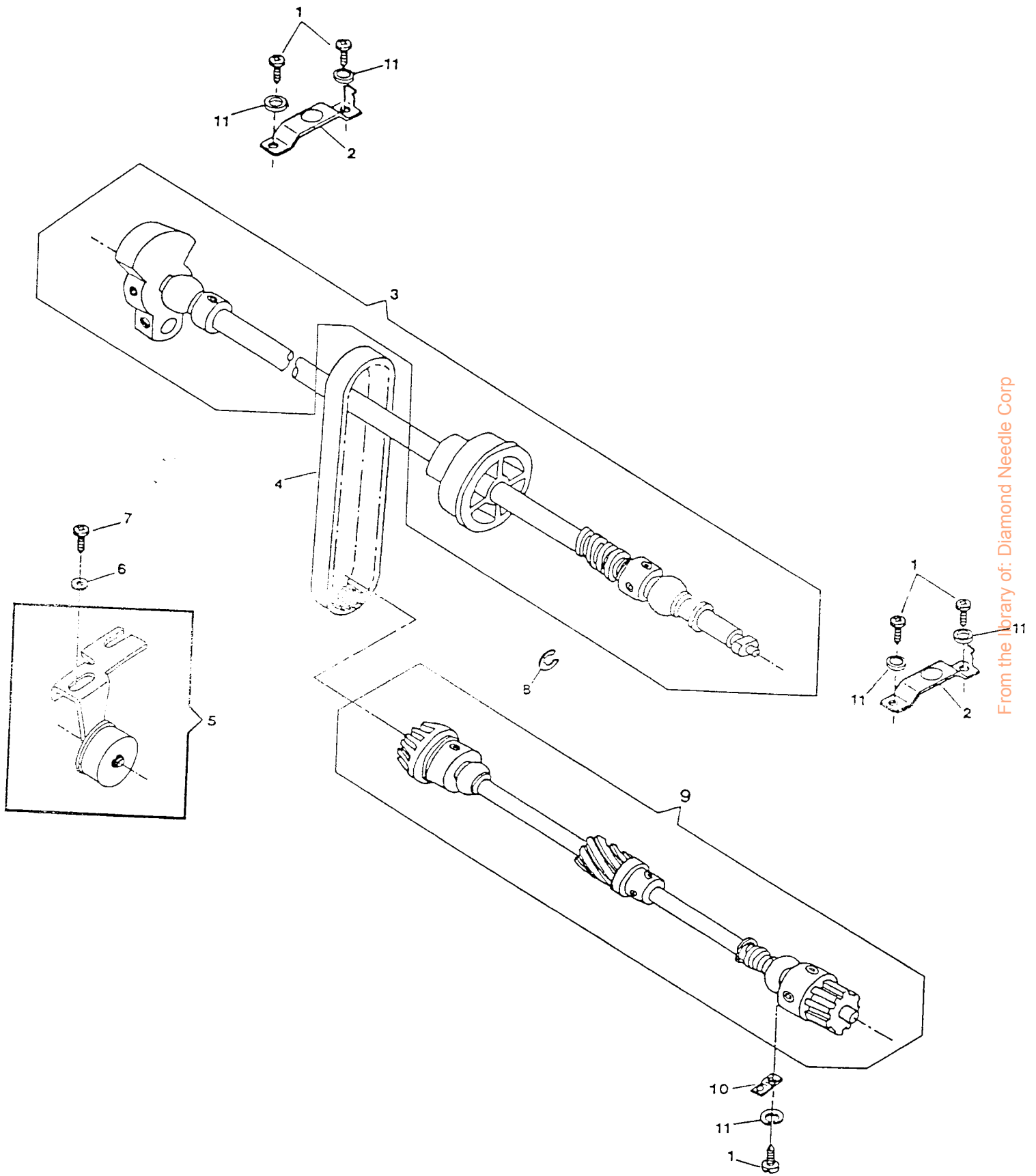
ARM TOP COVER



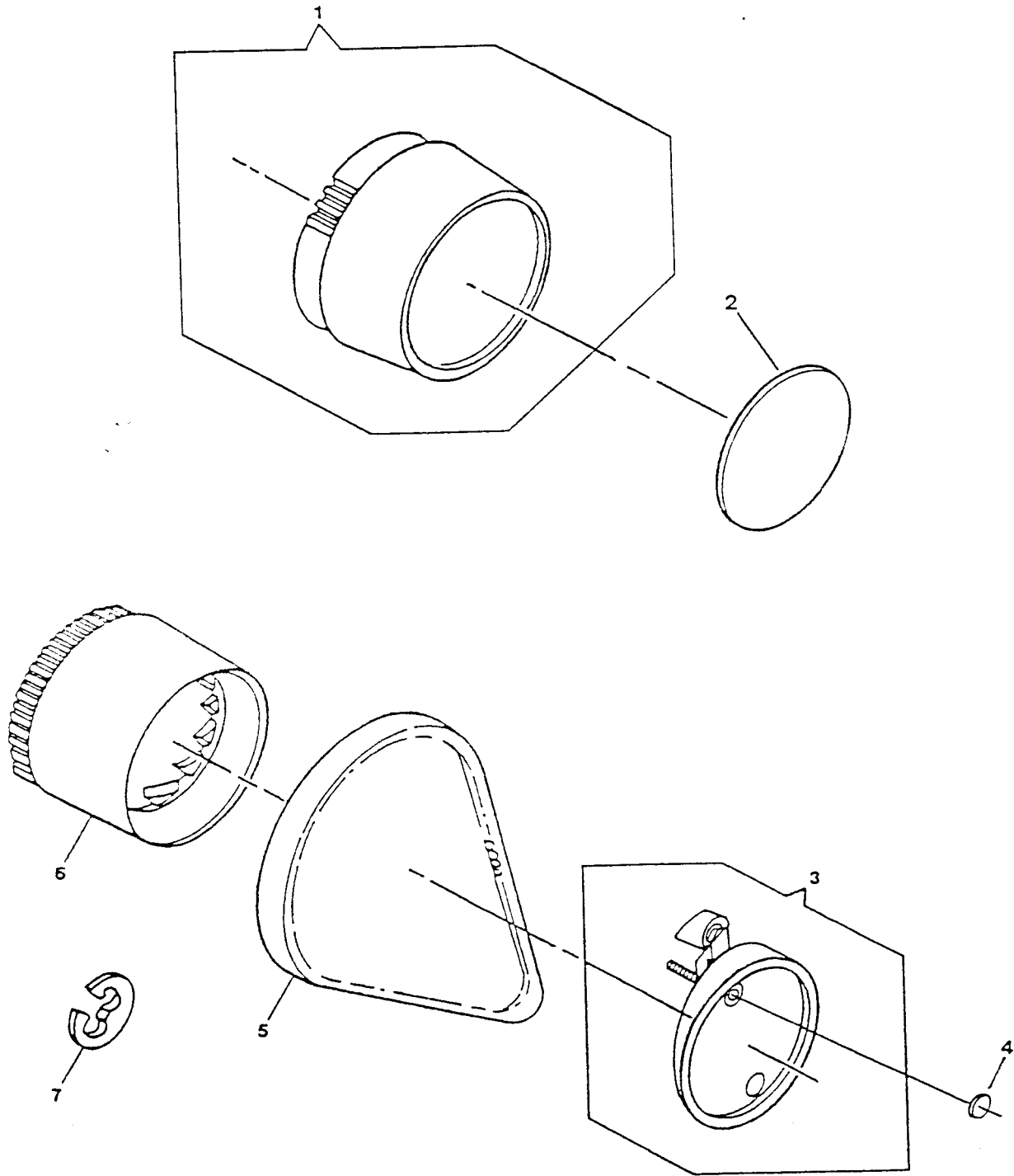
From the library of: Diamond Needle Corp

ARM SHAFT DRIVE SYSTEM
MODEL: 7033

REF. NO.	PART NO.	DESCRIPTION
1	113455-001	ARM SHAFT (HORIZONTAL) BUSHING (LEFT & RIGHT) CLAMP SCREW
2	312796	ARM SHAFT (HORIZONTAL) BUSHING (LEFT & RIGHT) CLAMP ASSEMBLY
3	313111-002	ARM SHAFT ASSEMBLY (APOLLO)
4	603975-011	BELT (ROTATING HOOK DRIVE) ALT:603975-012
5	313195	IDLER BRACKET ASSEMBLY
6	314041-451	ROTATING HOOK DRIVING BELT TENSION ADJUSTER SCREW WASHER
7	113455-002	ROTATING HOOK DRIVING BELT TENSION ADJUSTER SCREW
8	313153	HAND WHEEL RETAINING RING
9	314010	ROTATING HOOK DRIVE SHAFT SUB-ASSEMBLY
10	313816	ROTATING HOOK DRIVE SHAFT BUSHING (SELF-ALIGNING) CLAMP
11	314013-451	ROTATING HOOK DRIVE SHAFT BUSHING (SELF-ALIGNING) CLAMP SCREW AND ARM SHAFT BUSHING CLAMP SCREW LOCK WASHER



From the library of: Diamond Needle Corp



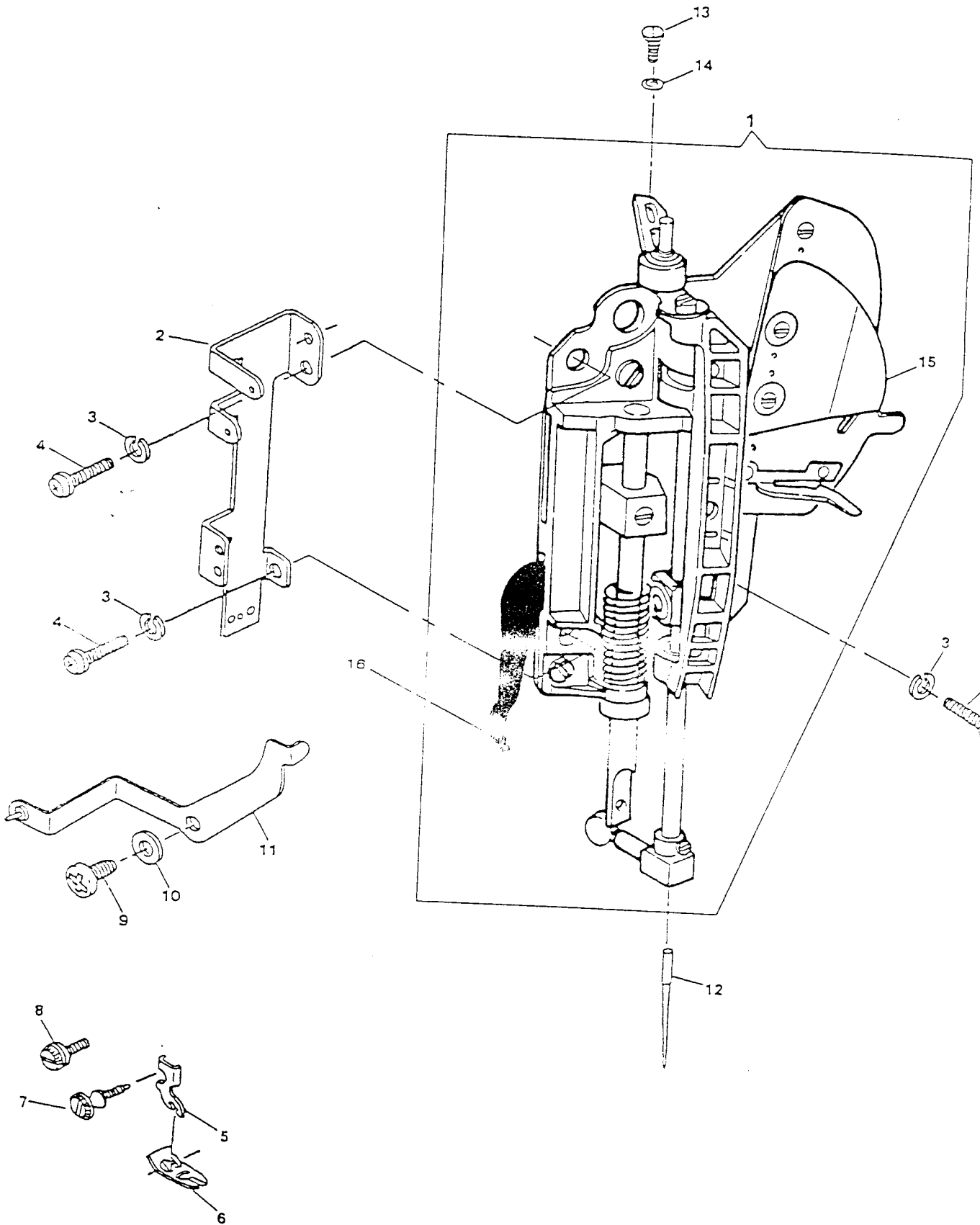
From the library of: Diamond Needle Corp

HAND WHEEL
 MODEL: 7033N103, N203, N203A, LEN203

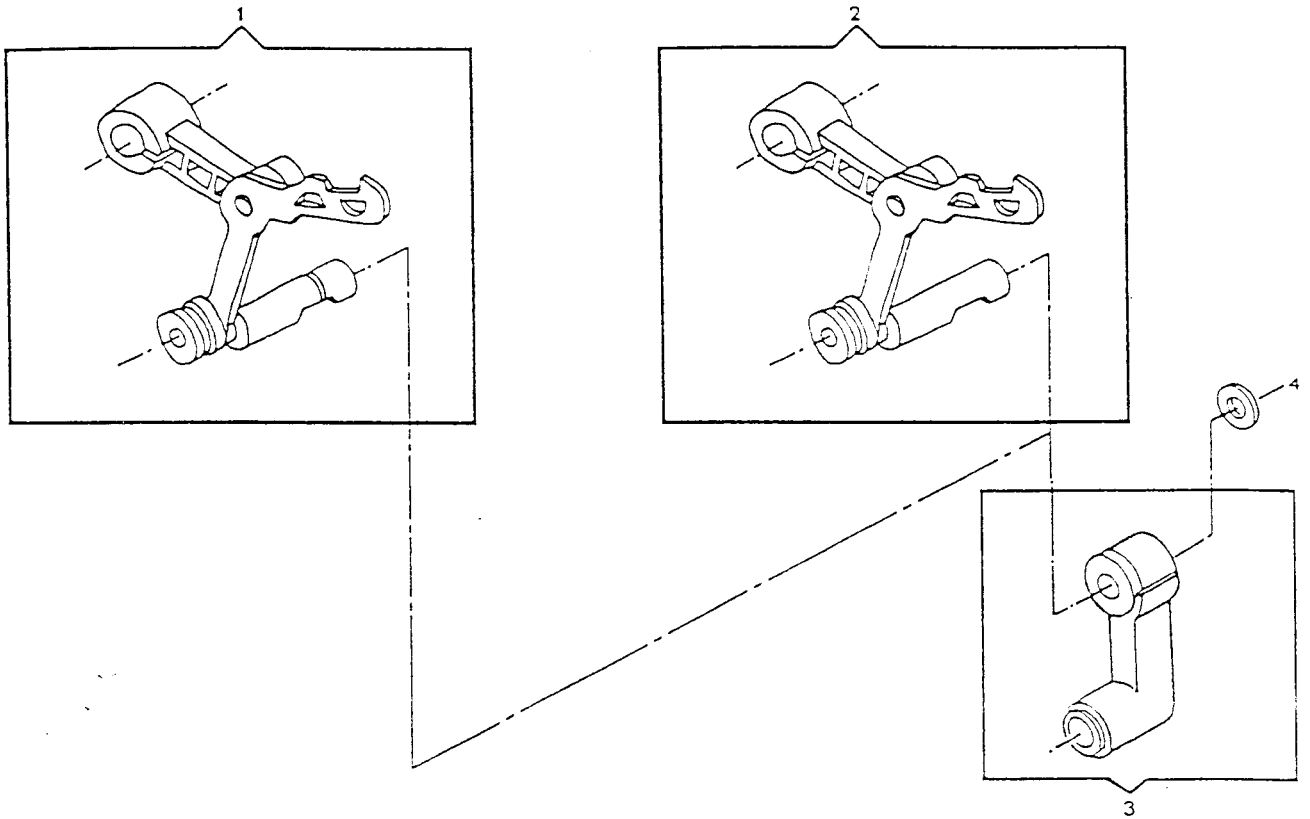
REF. PART NO.	PART NO.	DESCRIPTION	N	N	N	LN
			1	2	2	E2
			0	0	0	0
			3	3	3A	3
3	313185-451	HAND WHEEL CLUTCH PLATE ASSEMBLY (#310K)				
3	313185-453	HAND WHEEL CLUTCH PLATE ASSEMBLY	X			
4	314733-900	HAND WHEEL ACCESS PLATE		X	X	X
5	312628-001	BELT (MOTOR DRIVE) ALT: 979285-001	X	X	X	X
6	312625-451	HAND WHEEL (#310K)	X	X	X	X
6	312625-453	HAND WHEEL	X			
7	313153	HAND WHEEL RETAINING RING		X	X	X
			X	X	X	X

COAXIAL PRESSER BAR SYSTEM
MODEL: 7033

REF. PART NO.	PART NO.	DESCRIPTION
1	314695-002	HEAD END MODULE (APOLLO)
2	314591	FACE PLATE MOUNTING BRACKET
3	313955-451	HEAD END MOUNTING PLATE LOCK WASHER
4	113455-012	HEAD END MOUNTING PLATE SCREW
5	163706-451	PRESSER FOOT SHANK (SNAP-ON)
6	313150	PRESSER FOOT PLATE (SNAP-ON) FOR ZIG-ZAG SEWING
7	113531-451	PRESSER FOOT THUMB SCREW
9	113455-001	NEEDLE THREAD TENSION RELEASE LEVER HINGE SCREW
10	314041-451	NEEDLE THREAD TENSION RELEASE LEVER RETAINING WASHER
11	314589	NEEDLE THREAD TENSION RELEASE LEVER ASSEMBLY
12	N2045	NEEDLE (SIZE NO.14)
13	113408-001	NEEDLE BAR DRIVING ARM BALL JOINT SCREW
14	931929-004	NEEDLE BAR DRIVING ARM BALL JOINT SCREW WASHER
15	314690	THREAD PINCH PLATE
16	314582	PRESSER BAR LIFTER



From the library of: Diamond Needle Corp



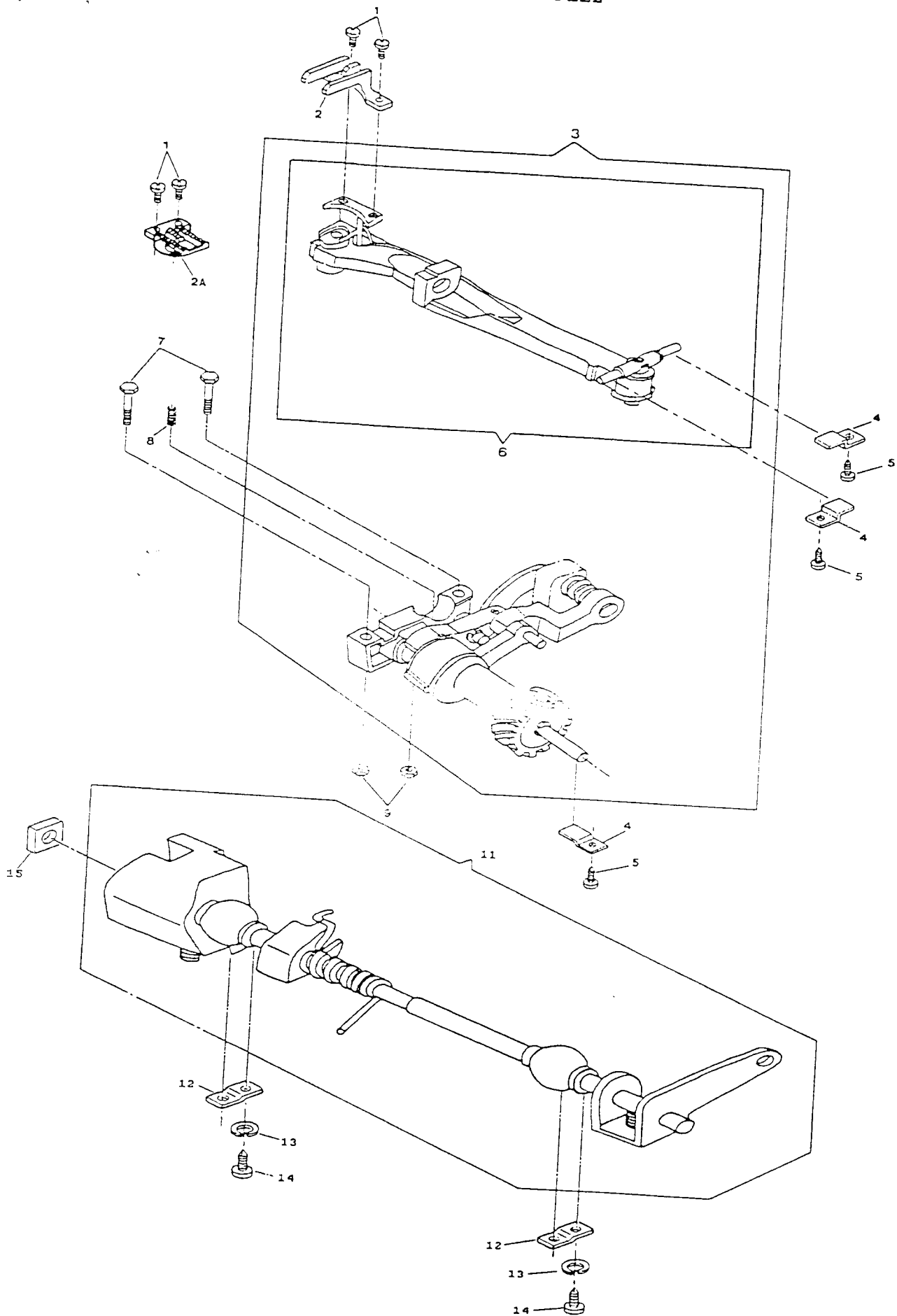
From the library of: Diamond Needle Corp

NEEDLE BAR & THREAD TAKE-UP FOR NEW HEAD END
MODEL: 7033

REF. PART NO.	PART NO.	DESCRIPTION
1	314694	THREAD TAKE-UP COMPLETE (APOLLO)
3	137528-901	NEEDLE BAR CONNECTING LINK
4	314071	WASHER, THREAD TAKE-UP LEVER

ALPHA FEED
MODEL: 7033

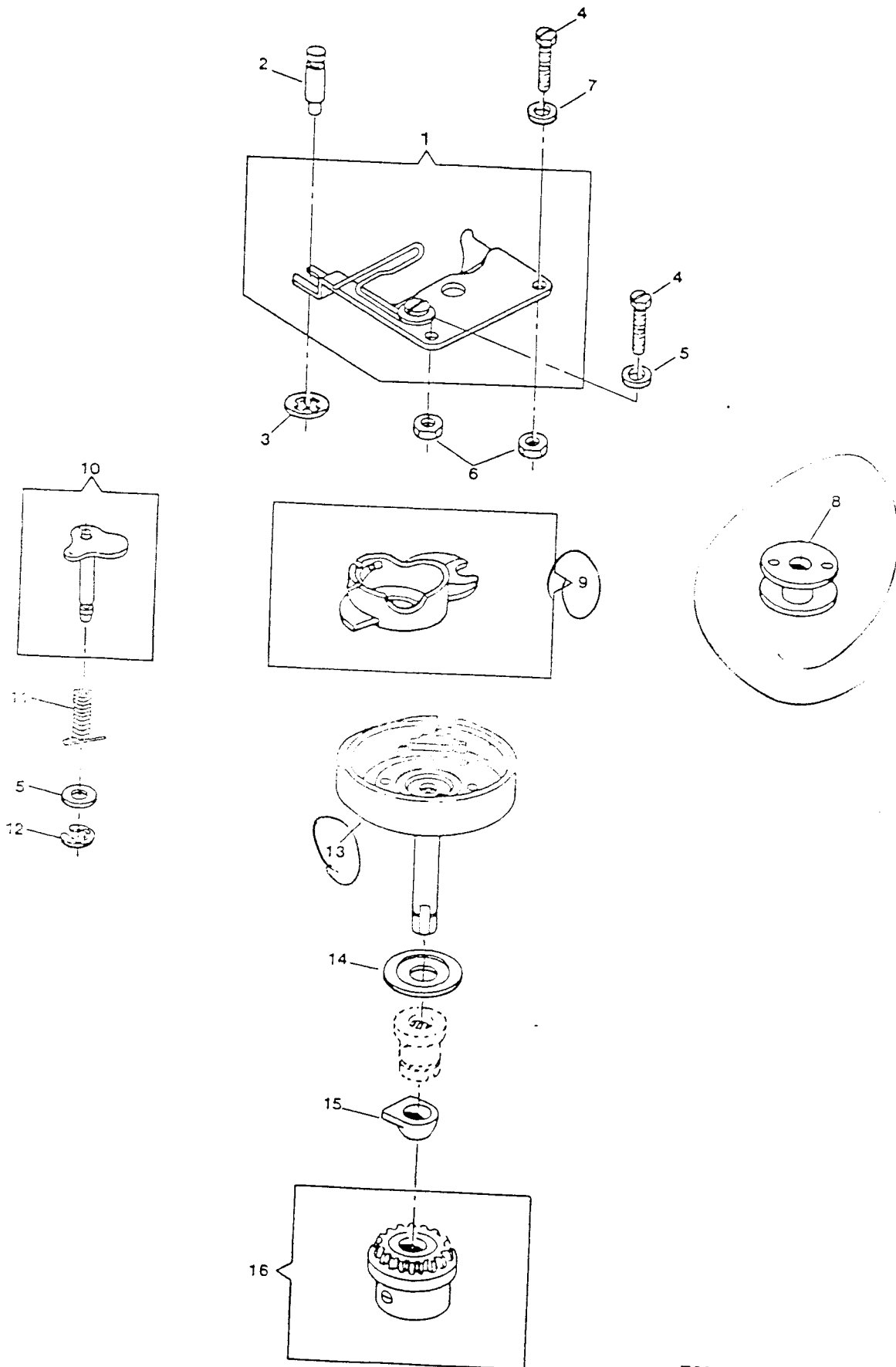
REF. PART NO.	PART NO.	DESCRIPTION
1	141920-452	FEED DOG SCREW
2	312679	FEED DOG (APOLLO) ALT:313171
3	314140-002	ALPHA FEED MODULE (ALT:313011)
4	312851	FEED BAR PIVOT HINGE STUD CLAMP
5	113455-003	CLAMP SCREW
6	314141	FEED BAR ASSEMBLY
7	354921-451	FEED & ROTATING HOOK DRIVE SHAFT BEARING BLOCK SCREW
8	314070	ROTATING HOOK DRIVE SHAFT BUSHING SPRING
9	514674-451	FEED & ROTATING HOOK DRIVE SHAFT BEARING BLOCK MOUNTING SCREW NUT
11	313133	FEED REGULATOR SHAFT ASSEMBLY
12	313816	FEED REGULATOR SHAFT BUSHING (SELF-ALIGNING) CLAMP
13	314013-451	FEED REGULATOR SHAFT BUSHING (SELF-ALIGNING) CLAMP SCREW LOCK WASHER
14	113455-001	FEED REGULATOR SHAFT BUSHING (SELF-ALIGNING) CLAMP SCREW
15	511030	FEED REGULATOR SLIDE BLOCK



From the library of: Diamond Needle Corp

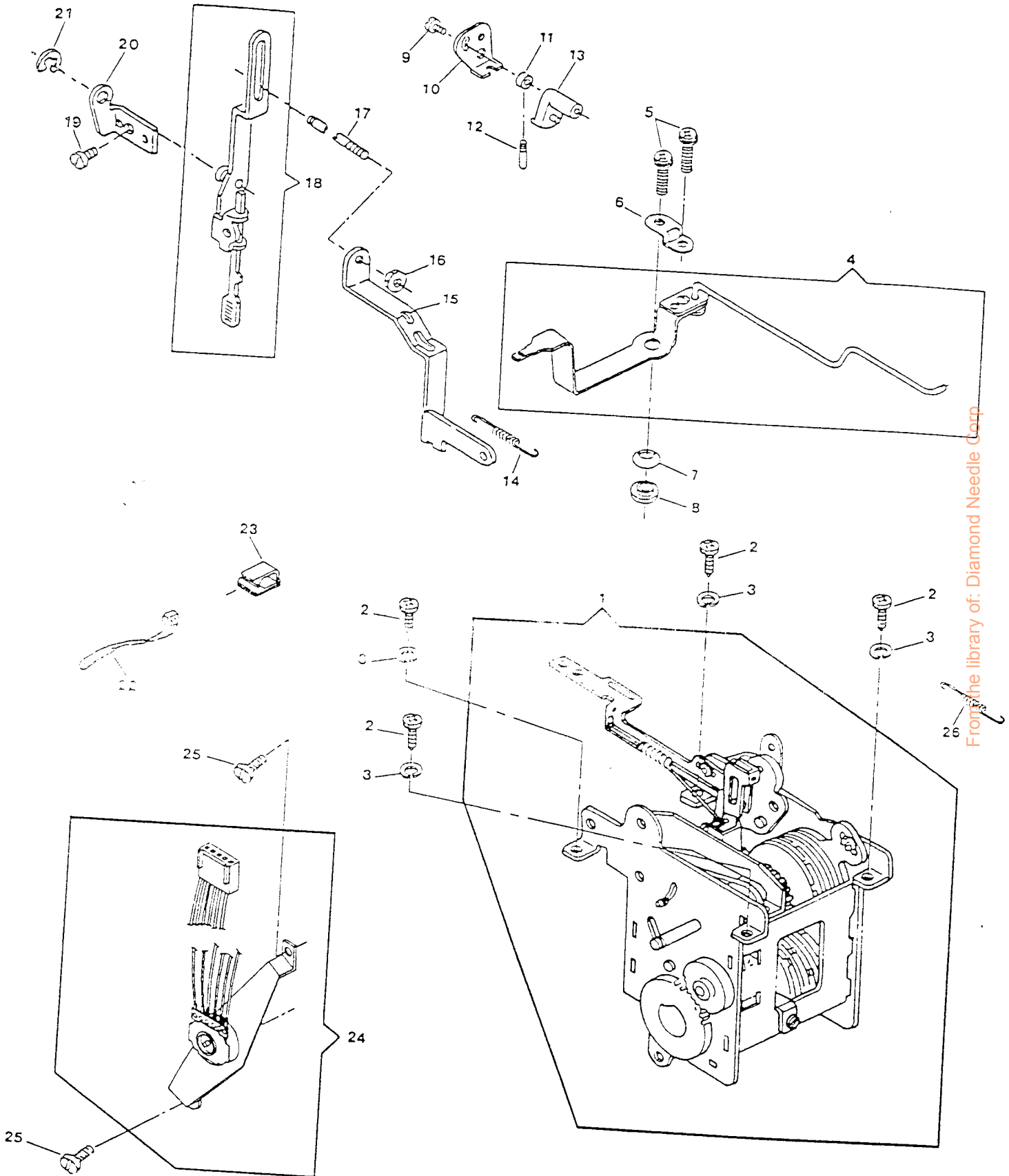
HOOK SYSTEM (APOLLO)
MODEL: 7033

REF. NO.	PART NO.	DESCRIPTION
1	314066	ROTATING HOOK BOBBIN CASE POSITION PLATE ASSEMBLY (ALT:313089)
2	312603	ROTATING HOOK BOBBIN CASE POSITION PLATE HOLD DOWN STUD
3	313161	ROTATING HOOK BOBBIN CASE POSITION PLATE HOLD DOWN STUD RETAINER
4	113439-451	ROTATING HOOK BOBBIN CASE POSITION PLATE SCREW
5	313190-451	ROTATING HOOK BOBBIN CASE POSITION PLATE SCREW WASHER (LEFT)
6	313945-451	ROTATING HOOK BOBBIN CASE POSITION PLATE SCREW NUT
7	446138	ROTATING HOOK BOBBIN CASE POSITION PLATE SCREW WASHER (RIGHT)
8	172336-001	ROTATING HOOK BOBBIN (PLASTIC)
9	421325-003	ROTATING HOOK BOBBIN CASE COMPLETE
10	312846	ROTATING HOOK BOBBIN CASE RETAINING PLATE SUB-ASSEMBLY
11	312607	ROTATING HOOK BOBBIN CASE RETAINING PLATE STUD SPRING
12	313783	ROTATING HOOK BOBBIN CASE RETAINING PLATE STUD RETAINING RING
13	314025	ROTATING HOOK COMPLETE
14	314049	ROTATING HOOK FLANGED BUSHING THRUST WASHER
15	312847	ROTATING HOOK FLANGED BUSHING WASHER
16	314101-900	ROTATING HOOK BEVEL GEAR COMPLETE (ALT:314012)



PATTERN STITCH LENGTH CONTROL & CAM CONTROLLED FEED
MODEL: 7033

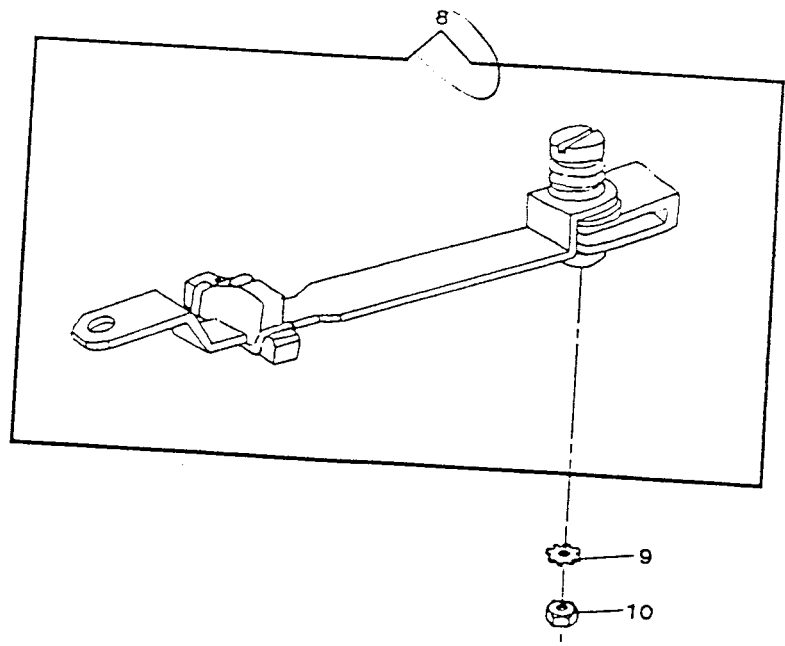
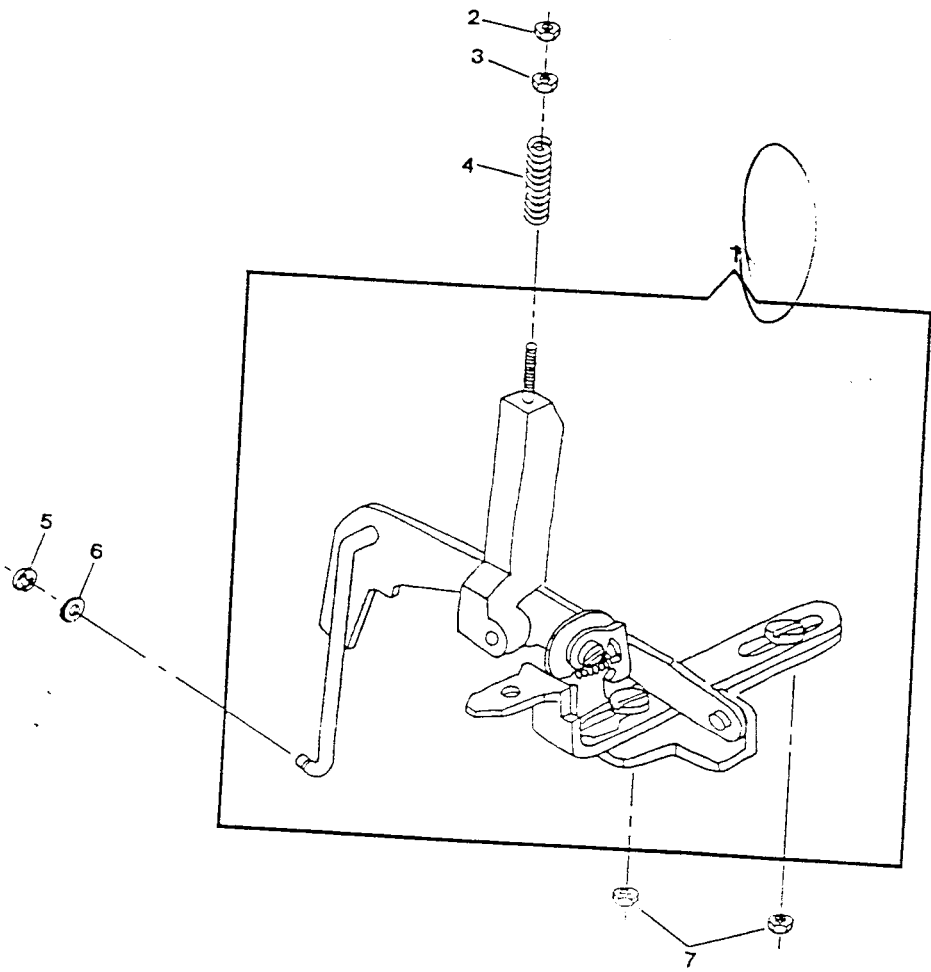
REF. PART NO.	PART NO.	DESCRIPTION
1	314601-001	PATTERN SELECTOR MODULE
2	113455-001	DISC SELECTOR MECHANISM MOUNTING PLATE SCREW (LEFT AND RIGHT)
3	314013-451	DISC SELECTOR MECHANISM MOUNTING PLATE SCREW (LEFT AND RIGHT) LOCK
4	314607-003	BIGHT AMPLITUDE CONTROL LEVER ASSEMBLY
5	113455-014	BIGHT AMPLITUDE CONTROL LEVER STOP ADJUSTMENT SCREW
6	314683	BIGHT AMPLITUDE CONTROL LEVER RETAINER
7	353457	BIGHT AMPLITUDE CONTROL LEVER FRICTION WASHER
8	314611	BIGHT AMPLITUDE CONTROL LEVER SHOULDER WASHER
26	314497	NEEDLE BAR DRIVING ARM SLIDE POSITIONING SPRING



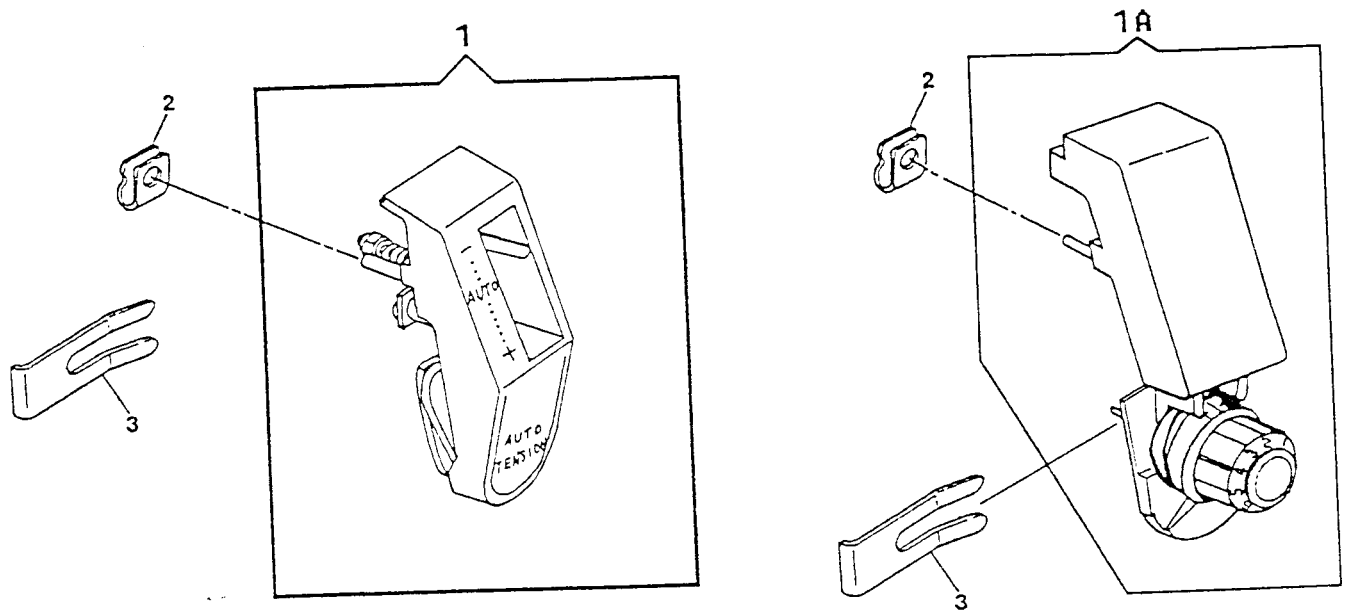
From the library of: Diamond Needle Corp

PATTERN, STITCH LENGTH CONTROL & CAM CONTROLLED FEED (CONT.)
MODEL: 7033

REF. PART NO.	PART NO.	DESCRIPTION
1	314300-001	FEED REVERSE MECHANISM
2	514674-451	CAM CONTROLLED FEED CONNECTING ROD LOCKING NUT
3	312645-451	CAM CONTROLLED FEED DISC FOLLOWER ACTUATOR CONNECTING ROD ADJUSTING
4	313143	CAM CONTROLLED FEED DISC FOLLOWER ACTUATOR CONNECTING ROD SPRING
5	312702	FEED LEVER CONNECTING LINK RETAINING RING
6	313891	CAM CONTROLLED FEED CONNECTING ROD STABILIZING WASHER
7	514674-451	REVERSE FEED CONTROL LEVER GUIDE SCREW NUT
8	313569-001	STITCH LENGTH CONTROL LEVER ASSEMBLY
9	313172-451	STITCH LENGTH CONTROL LEVER PIVOT LOCK WASHER
10	313177-451	STITCH LENGTH CONTROL LEVER NUT



From the library of: Diamond Needle Corp



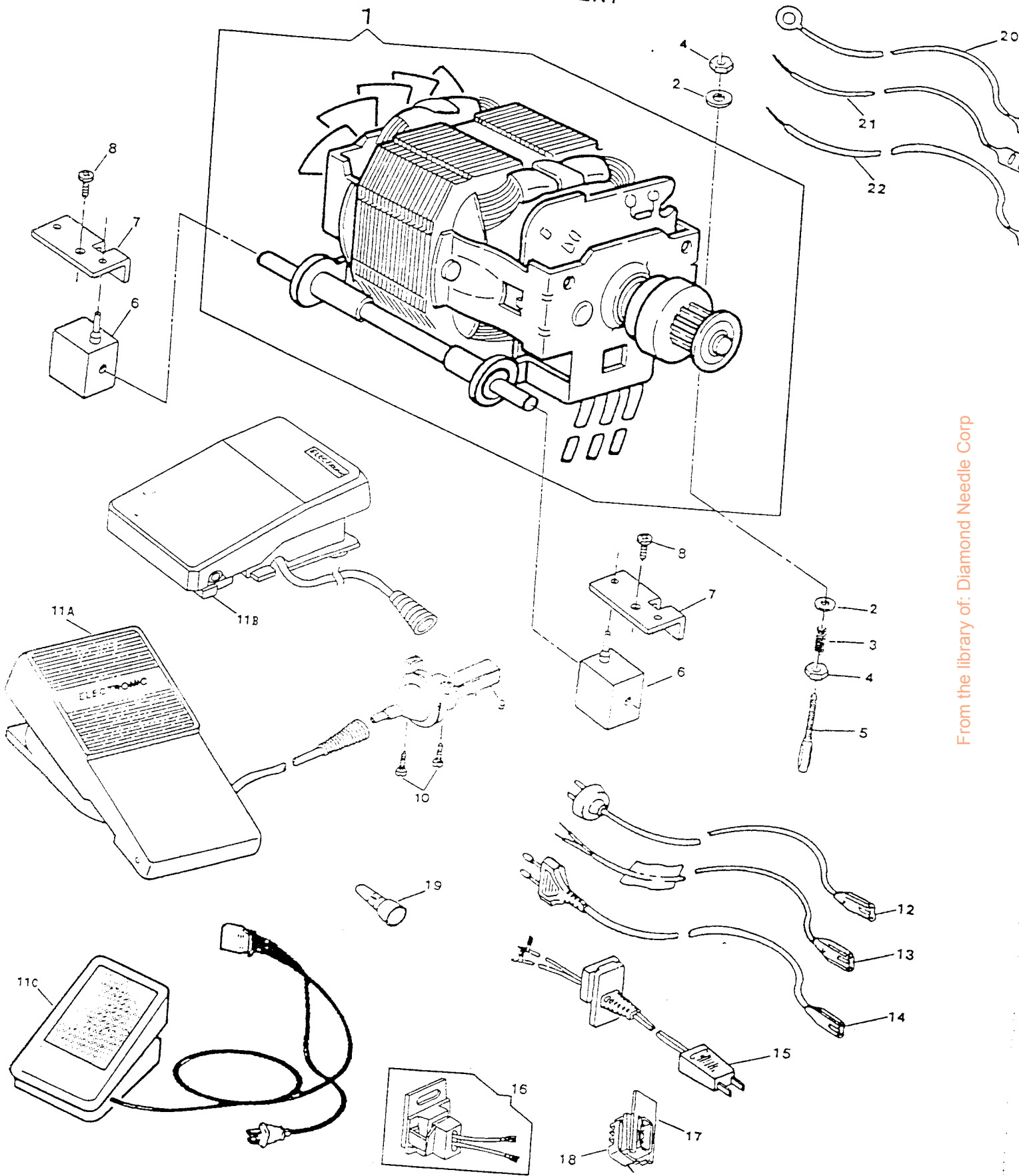
From the library of: Diamond Needle Corp

DEMAND RESPONSIVE NEEDLE TENSION SYSTEM
 MODEL: 7033N103, N203, N203A, LEN203

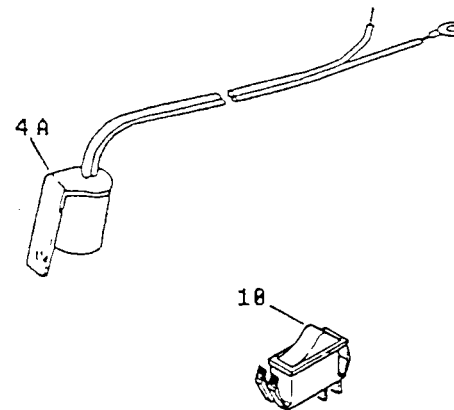
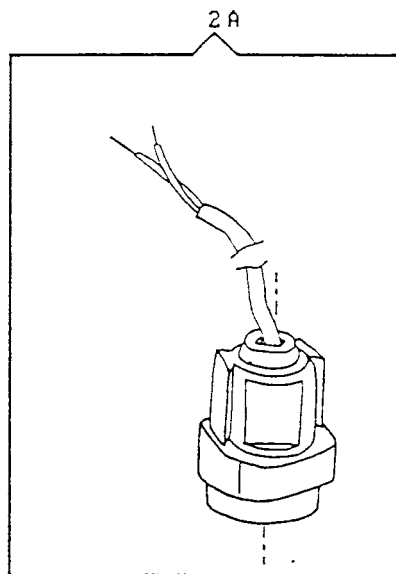
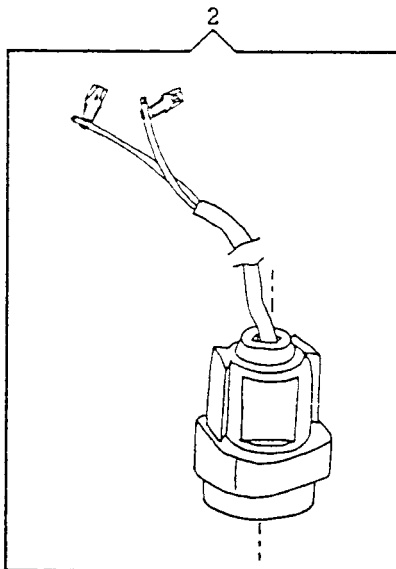
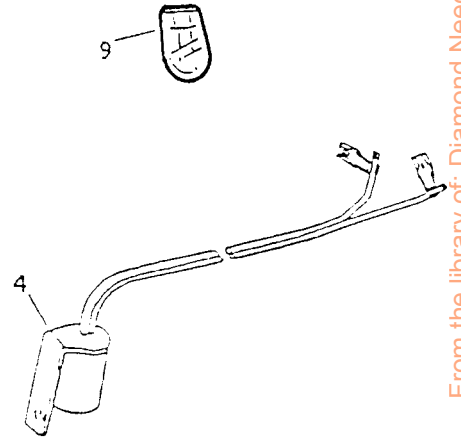
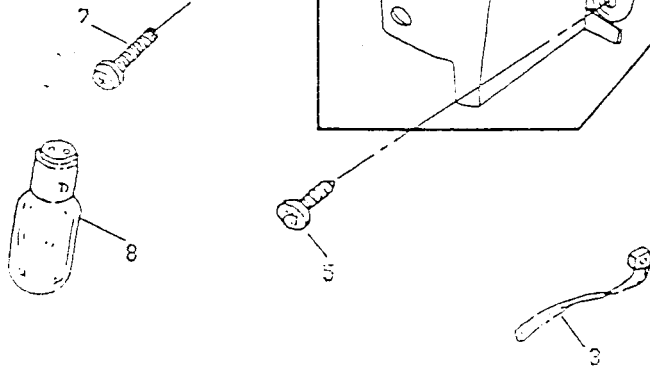
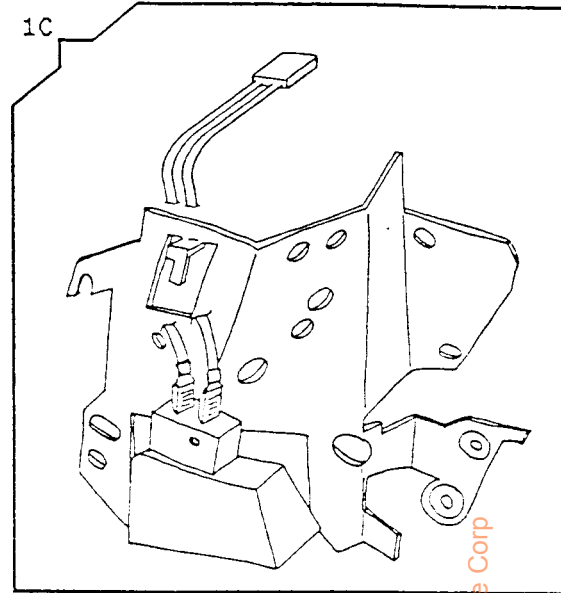
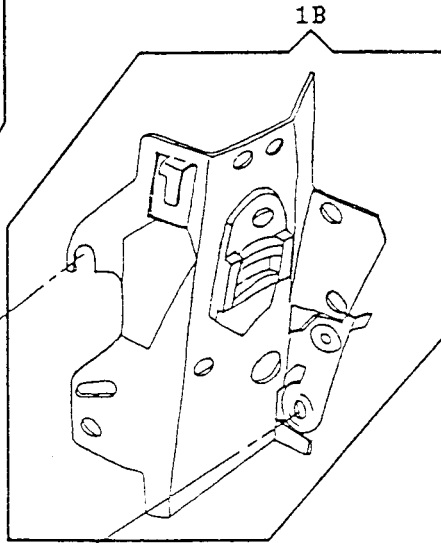
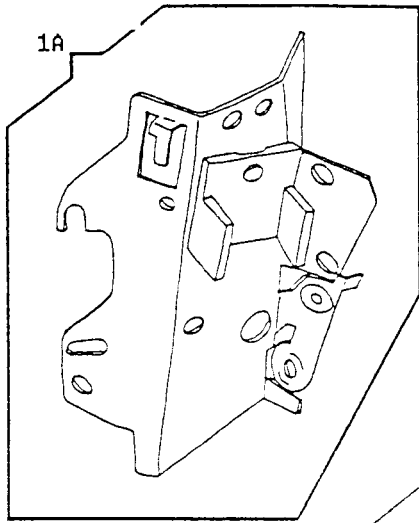
REF. NO.	PART NO.	DESCRIPTION	N	N	N	LN
			1	2	2	E2
			0	0	0	0
			3	3	3A	3
1	313077-012	THREAD TENSION MODULE (#310K)				
1	313077-020	THREAD TENSION MODULE (#3889)				
2	313199	TENSION COVER MOUNTING RETAINER	X			
3	313047	TENSION COVER RETAINING CLIP		X	X	X
			X	X	X	X
			X	X	X	X

ELECTRICAL EQUIPMENT
MODEL: 7033

REF. NO.	PART NO.	DESCRIPTION
1	988529-009	MOTOR COMPLETE (CAT. NO. TA4-8) (120V) (NATIONAL MOTOR)
1	988529-010	MOTOR COMPLETE (CAT. NO. TA4-11) 220/240VOLT
2	37969	MOTOR ADJUSTING STUD NUT WASHER
3	314058	MOTOR BELT TENSION SPRING
4	53646	MOTOR ADJUSTING STUD NUT
5	988653-001	MOTOR ADJUSTING STUD
6	979329-001	RESILIENT MOUNT
7	988651-001	CLIP
8	113470-004	MOTOR MOUNTING SCREW
9	988549-005	PNEUMATIC TRANSDUCER
10	113444-003	PNEUMATIC TRANSDUCER MOUNTING SCREW
11A	988667-001	PNEUMATIC CONTROLLER ASSEMBLY
11C	137904	FOOT CONTROLLER W/PLUG ASS'Y (240V) (U.K.)
11C	319003-005	TRIAC FOOT CONTROLLER (DUAL VOLTAGE) (FOR U.S.A. ONLY)
12	988638-004	APPLIANCE COUPLER (240VOLT) FOR AUSTRALIA
13	137902	POWER PLUG WITH CORD ASS'Y (240V FOR U.K.)
15	988557-001	CORD COMPLETE (120V)
16	988657-003	CORD WITH RECEPTACLE (FOR EUROPE/U.K./AUSTRALIA)



From the library of: Diamond Needle Corp



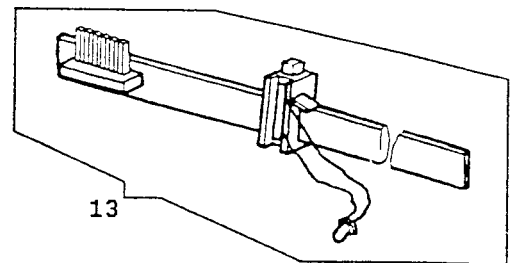
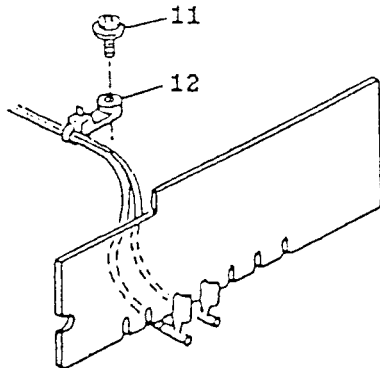
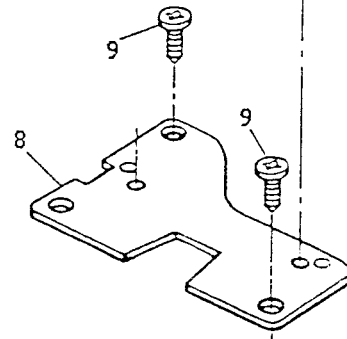
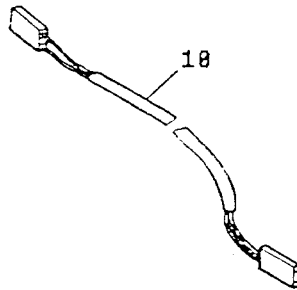
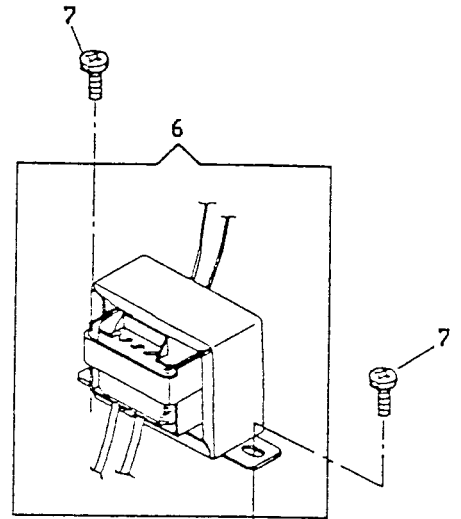
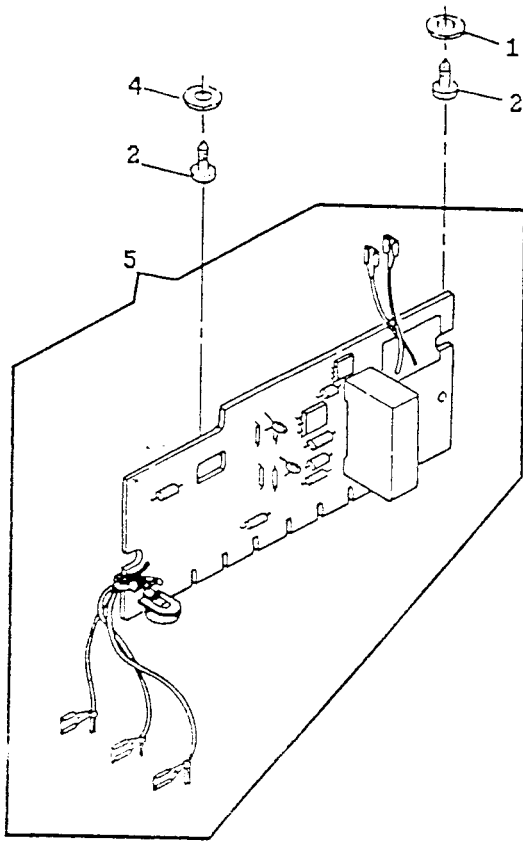
From the library of: Diamond Needle Corp

ELECTRICAL EQUIPMENT (CON'T)
MODEL: 7033

REF. PART NO.	PART NO.	DESCRIPTION
1A	314823-001	LINT AND HEAD SHIELD ASSEMBLY (220/240V) (FOR 9008N304)
1B	314823-003	LINT AND HEAD SHIELD ASSEMBLY (120V)
1B	314596-002	LINT AND HEAT SHIELD ASSEMBLY (100V)
2	979203-002	LIGHT ASSEMBLY (EUROPE) (220V)
2	979203-003	LIGHT ASSEMBLY (AUSTRALIA) (240V)
3	540899	TY-WRAP SELF-LOCKING (ALT:605600-001)
4	988728-001	LAMP SOCKET (120V) (US/CANADA)
5	113455-003	THREAD TAKE-UP COVER AND LINT/HEAT SHIELD SCREW
7	137813-002	SCREW, LINT AND HEAT SHIELD MOUNTING
8	194120-021	LIGHT BULB (240V) (ALT:542656-004) (FOR 9020N644)
8	194120-020	LIGHT BULB (220V) (ALT:542656-003) (FOR 9008N304)
8	194120-019	LIGHT BULB (120V) (ALT:542656-005) (DUAL VOLTAGE FOR U.S.A./KOREA/GERMANY & H.K.)
10	979585-005	ROCKER SWITCH

ELECTRICAL EQUIPMENT (CON'T)
MODEL: 7033

REF. PART NO.	NO.	DESCRIPTION
1	988547-002	WASHER, P.C. BOARD MOUNTING
2	113444-001	SCREW, P.C. BOARD MOUNTING
5	979584-001	SPEED CONTROL P.C. BOARD ASSEMBLY (120V) (FULL WAVE)
11	113455-001	SCREW, LIGHT HARNESS
12	604690-001	SELF-LOCKING NYLON CABLE TIE, LIGHT HARNESS



From the library of: Diamond Needle Corp